

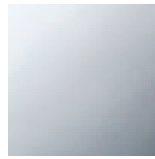


Shower - CL.1

WATER POINTS Body spray - polished chrome

Article number: 36 515 979-00

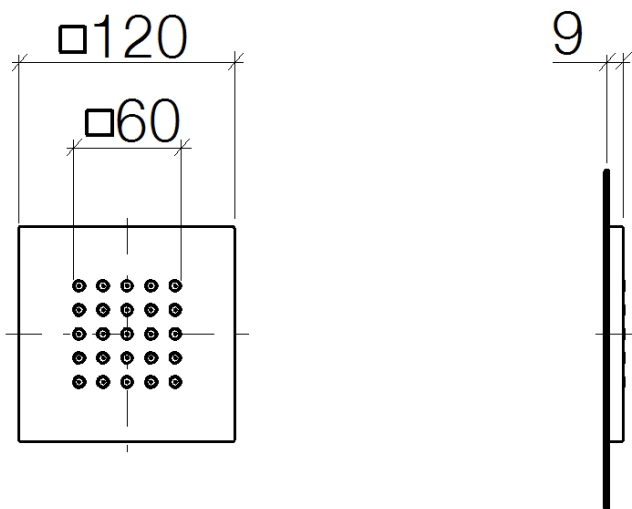
- Stream: Rain
- Descaling system
- Cover plate 4-3/4" x 4-3/4"
- Water flow rate limited to max. 1.6 gpm
- Fittings group in compliance with DIN 4109: 1



polished chrome

Accessory is required for this item.

Dimensional drawing



All dimensions in mm / inch = mm x 0,0394

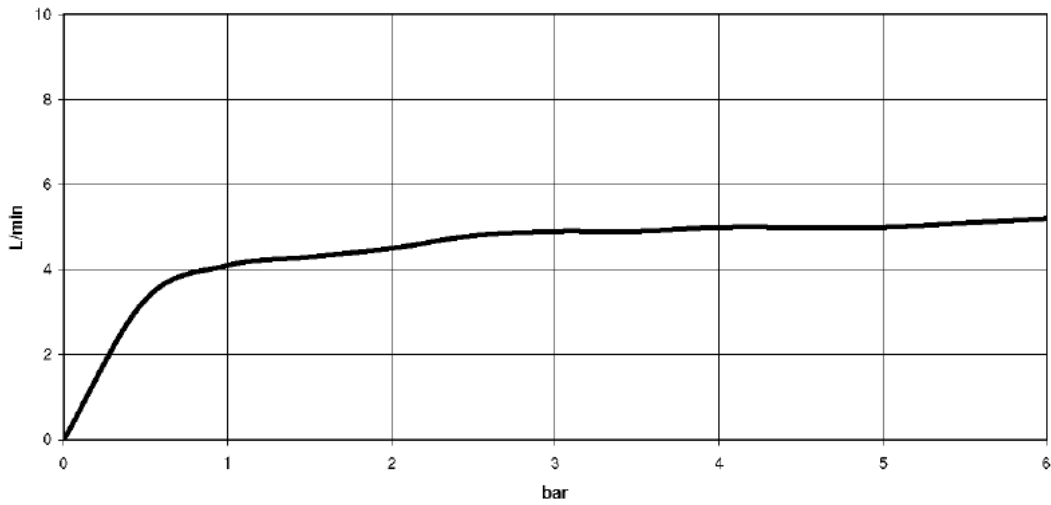


Shower - CL.1

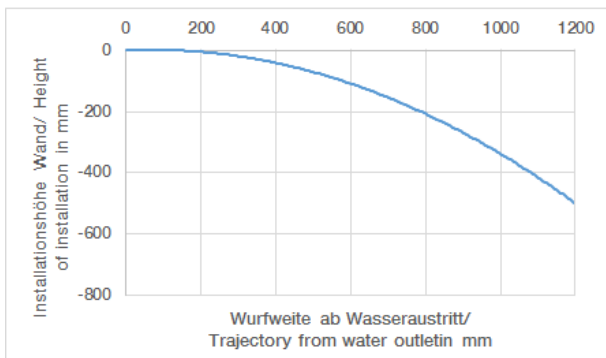
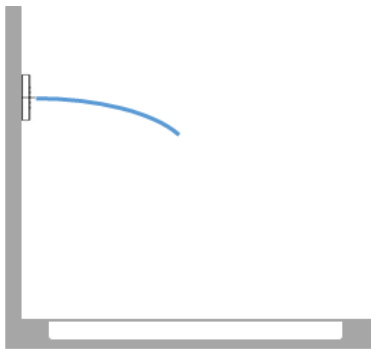
WATER POINTS Body spray - polished chrome

Article number: 36 515 979-00

Flow rate chart



Trajectory length diagram





Shower - CL.1

WATER POINTS Body spray - polished chrome

Article number: 36 515 979-00

Other surface finishes



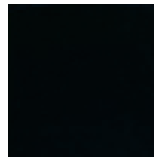
platinum matte
36 515 979-06



platinum
36 515 979-08



Brushed Durabrass
36 515 979-28



black matte
36 515 979-33



Dark Platinum matte
36 515 979-99

More custom finish options are available via special production (xTra Service). Please see our finish matrix for availability and pricing or contact a Dornbracht representative.

Required article



35 205 970-90 0010

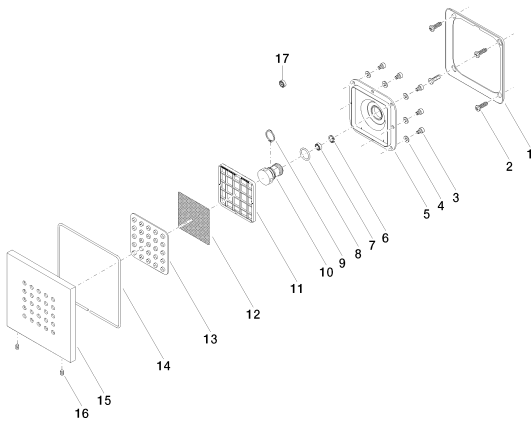
Rough -

Shower - CL.1

WATER POINTS Body spray - polished chrome

Article number: 36 515 979-00

Spare parts list



Number	Item Number	Designation	Number of units
1	09 28 01 024 90	holder	1
2	09 30 31 022 90	screw	4
3	09 30 30 031 90	screw	8
4	09 30 11 024 90	disc	8
5	09 12 12 205 90	base	1
6	09 16 01 016 90	ring	1
7	09 23 01 032 90	flow reducer	1
8	09 14 10 130 90	seal	1
9	09 16 01 017 90	ring	1
10	09 17 11 146 90	distributor	1
11	09 17 97 057 90	holder	1
12	09 29 30 043 90	insert	1
13	09 12 01 075 90	insert	1
14	09 14 03 117 90	seal	1
15	09 27 98 004-00	rosette	1
16	09 31 11 048 90	pin	1
17	09 23 01 052 90	flow reducer	1