

BATH MIXING PROGRAM

Art. 09272

Installation of built-in parts

GESSI 

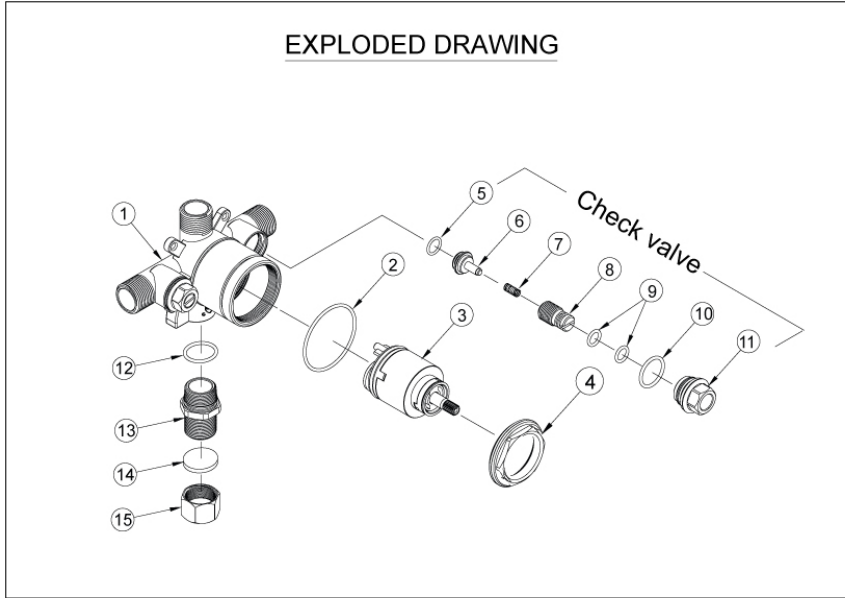
Gessi SpA - Parco Gessi

13037 Serravalle Sesia (Vercelli) - Italy

Phone +39 0163 454111 - Facsimile +39 0163 459273

www.gessi.com - gessi@gessi.it

EXPLODED DRAWING

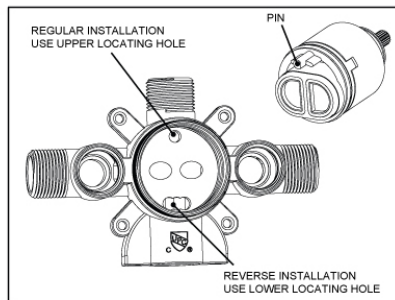
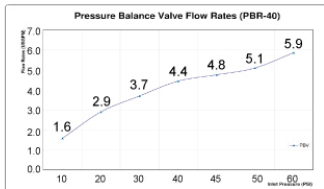


REVERSING CARTRIDGE FOR BACK – TO – BACK INSTALLATIONS ONLY

WHEN A VALVE IS INSTALLED WITH REVERSED SUPPLY CONNECTIONS (TYPICALLY IN A BACK – TO – BACK SITUATION). THE CARTRIDGE CAN BE REVERSED TO ALLOW NORMAL OPERATION .

- 1.REMOVE TRIM SLEEVE TO EXPOSE TOP OF VALVE.
- 2.LOOSEN AND REMOVE HEX NUT ABOVE CARTRIDGE.
- 3.REMOVE CARTRIDGE FROM VALVE CAVITY.
- 4.LOOK INTO CAVITY TO SEE UPPER AND LOWER LOCATING HOLES FOR CARTRIDGE PIN ON THE FLOOR OF THE CAVITY.
- 5.RE-INSERT CARTRIDGE, ALIGNING THE PIN WITH LOWER LOCATING HOLE(PARTIALLY CUT AWAY BY DISCHARGE OPENING).
- 6.PRESS CARTRIDGE IN FIRMLY TO ASSURE THAT PIN HAS BEEN PROPERLY INSERTED.
- 7.SECURE CARTRIDGE BY TIGHTLY REASSEMBLING THE HEX NUT.
- 8.REASSEMBLE TRIM.

REPLACING CARTRIDGE
SAME BASIC PROCEDURE AS ABOVE
(REVERSE IF NECESSARY).



MAINTENANCE - ENTRETIEN - MANUTENCIÓN

Tools required for installation of this product are:

- Screw Driver
- Tubing cutter
- Teflon Tape
- Adjustable Wrench
- Channel-lock Pliers
- Measuring Tape
- Allen Key

NOTE: FLUSH ALL PIPING THOROUGHLY BEFORE INSTALLATION.

SHUT OFF THE WATER SUPPLY VALVES BEFORE INSTALLATION.

Teflon tape or pipe joint compound on all threaded connections are required.

Step 1:

Install piping and fittings to the valve body as shown as figure 1.

IMPORTANT: Valve rough-in is 1-1/2" from CENTERLINE OF SUPPLIES TO FACE OF FINISH WALL. IT COULD INCREASE THE DISTANCE TO 3" VIA "PLASTIC PLATE PLUG" AS SHOWN AS ALL FIGURES.

Facing front of valve body connect hot water to left side "up" and "down" cast into the back of body. Position "up" to the shower.

Measure the length of pipe from the valve body to the shower arm opening. Connect the pipe to the top thread of the valve body. Slip the flange onto the shower arm and connect shower arm to the supply pipe.

Step 2:

Install so that line indicated on plastic plate on valve is flush with finished wall as shown in Figure 2.

Step 3:

Release the screws on the valve by Philip screw driver. Then remove the plastic guard from the wall.

Figure 1.

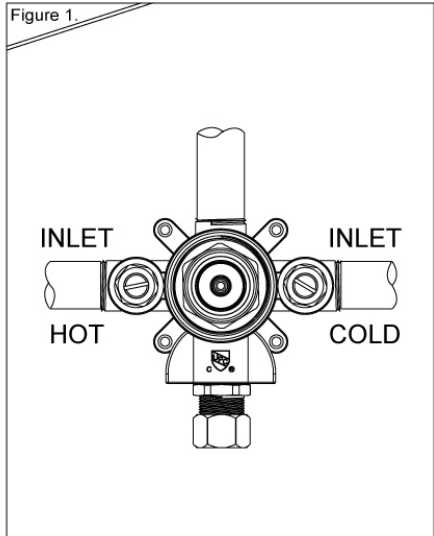
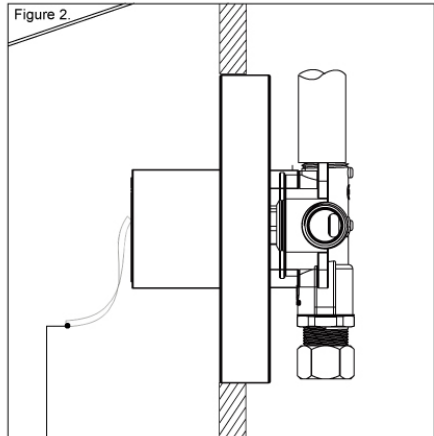
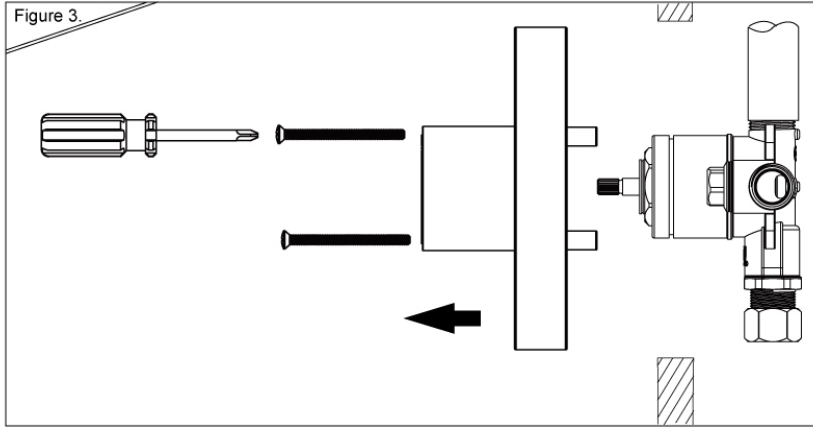


Figure 2.



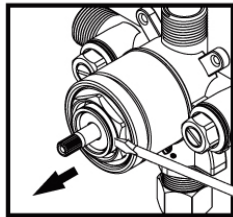
○ **INSTALLER-READ-IMPORTANT!!!**
HOT LIMIT RING MUST BE ADJUSTED FOR 120°F MAXIMUM OUTPUT
In accordance with ASSE/ANSI 1016-1996 4.2.2. Requirements
By removing this tape you agree to the terms and conditions of the
Warranty and Liability Statement found in the Installation Instructions



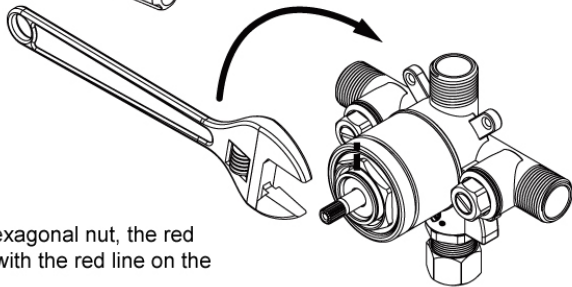
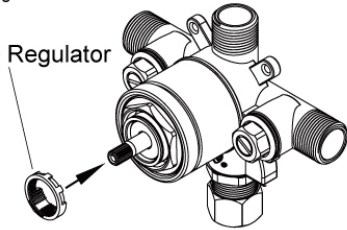
ATTENTION !!

Set the temperature you would like. Place the temperature regulator back into the cartridge.

Turn on the water supply valves to make sure the temperature suits your requirement. When water is running, check for any leak. Tighten connections as necessary.



Temperature Regulator



While tightening the hexagonal nut, the red line has to be aligned with the red line on the center of the body.

MAINTENANCE - ENTRETIEN - MANUTENCIÓN

MANUFACTURER'S LIMITED WARRANTY: CONSUMER

RESIDENTIAL PRODUCTS

Warranty on Pressure Balance Valves for residential application

Gessi provides to the original purchaser of its valves for residential application in the U.S. and Canada the following limited warranties against manufacturing defects in material and workmanship during their normal usage, a limited warranty for a two (2) year period from the date of purchase. Cartridges are warranted for a period of 1 year from date of purchase.

Remedies under Warranty

Gessi (through its US distributor Gessi USA) will provide free of charge at its sole option, replacement part(s) or product (or if no longer available, a comparable product) to replace those which have proven defective in materials or workmanship.

If you believe that you have a warranty claim for a Gessi product, the product must be returned to the dealer where originally purchased along with proof of purchase and a pertinent description of the problem and of your claim. A Return Goods Authorization ("RGA") Form must be requested and submitted to Gessi USA with an authorized RGA number assigned by Gessi USA together with proper documentation for all warranty claims.

This warranty applies to the original consumer owner; **IT DOES NOT COVER INSTALLATION OR ANY OTHER LABOR CHARGES AND SHALL NOT APPLY TO ANY PRODUCTS OR PARTS OF PRODUCTS WHEN:**

- the repairs and/or installations covering the products were not made by an officially licensed installer or were negligently performed, and/or Gessi spare parts, or parts that have been altered in any manner were used, unless previously authorized in writing by Gessi USA; or,
- the covered products were damaged as a result of misuse, negligence, accident or faulty installation or maintenance performed by a plumber, contractor, service provider or member of the purchaser's household; or,
- the covered products were installed or used in a manner contrary to a product's printed instructions or this warranty's instructions for filing a claim were not followed by the consumer ; or,
- the covered products were damaged by the effects of severe air or water conditions, dirt, limescale or harsh, abrasive or aggressive cleaners and/or materials; or,
- the covered products were damaged as a result of conditions, malfunctions or defects derived from normal wear and tear; or,
- the covered products were damaged by ice and/or impurities present in the pipes; or,
- the covered products were used as a tool, hammer or for any purposes other the one it has been designed for; or,
- electric cables were attached to the products; or,
- the warranty claim on the covered product(s) resulting from filter taps not being installed in the main water system or not installed before the supply hoses of the faucet.

THIS WARRANTY IS THE SOLE AND EXCLUSIVE WARRANTY GRANTED BY GESSI AND IS IN LIEU OF ALL OTHER WARRANTIES EXPRESSED OR IMPLIED, INCLUDING THE IMPLIED WARRANTY OF MERCHANTABILITY AND GESSI USA OR FITNESS FOR A PARTICULAR PURPOSE, AND IS LIMITED TO DEFECTIVE PARTS REPLACEMENT ONLY. THE FOREGOING WARRANTIES ARE IN LIEU OF ALL OTHER WARRANTIES EXPRESS OR IMPLIED, INCLUDING BUT NOT LIMITED TO THE IMPLIED WARRANTIES OF MERCHANTABILITY AND FITNESS FOR A PARTICULAR PURPOSE.

THIS WARRANTY IS LIMITED SOLELY TO THE ABOVE AND THIS WARRANTY AND ANY WARRANTIES IMPLIED BY STATE LAW; IF ANY WILL APPLY ONLY FOR THE APPLICABLE WARRANTY PERIOD SPECIFIED HEREIN. GESSI AND ITS US AUTHORIZED DISTRIBUTOR GESSI USA WILL NOT BE LIABLE FOR ANY LOSS, DAMAGE, EXPENSE OR INCIDENTAL OR CONSEQUENTIAL DAMAGES OF ANY KIND, WHETHER BASED ON WARRANTY, CONTRACT OR NEGLIGENCE AND ARISING IN CONNECTION WITH THE SALE USE OR REPAIR OF GESSI PRODUCTS. SOME STATES DO NOT ALLOW THE EXCLUSION OR LIMITATION OF CONSEQUENTIAL DAMAGE OR LIMITATIONS ON HOW LONG AN IMPLIED WARRANTY LASTS. AS A RESULT, IN CERTAIN STATES THE ABOVE LIMITATIONS OR EXCLUSIONS MAY NOT

MAINTENANCE - ENTRETIEN - MANUTENCIÓN

APPLY. THIS WARRANTY GIVES YOU SPECIFIC LEGAL RIGHTS, AND YOU MAY ALSO HAVE OTHER RIGHTS WHICH VARY FROM STATE TO STATE, UNLESS OTHERWISE CONTRARY TO STATE LAW GOVERNING THE PURCHASE, GESSI LIABILITY WILL NOT EXCEED THE CONTRACT PRICE FOR THE PRODUCT CLAIMED TO BE COVERED UNDER A WARRANTY CLAIM.

For service under this warranty, a request should be made through the contractor or dealer from whom the product was purchased, or a service request (including a description of the product model and nature of the defect with a request for a RGA) be sent to the following address:

Gessi USA, Inc.

704 North Valley Street, Suite E

Anaheim – California 92801 CA

Tel 714 808 0099

Fax 714 808 0973

Please include in your letter:

- data of purchase and installation
- model, serial number of product, description of part to consider
- description of the defect
- copy of the original sales receipt (without a sales receipt this warranty will not be honoured).

APPLICATION LAW

If your purchase was made directly from Gessi S.p.A. the UCC applies and application of the UN Convention on International Sales of Goods is expressly excluded.

This is the Gessi exclusive written warranty to the consumer.

MAINTENANCE - ENTRETIEN - MANUTENCIÓN

MANUFACTURER'S LIMITED WARRANTY: COMMERCIAL WARRANTY

Gessi provides the following a limited warranty for commercial application of its products: Gessi warranties that its products shall be free from defects in finish, material and workmanship for a period of one (1) year from the date of commercial installation.

This warranty does not include shipping cost for returning covered products for repairs or replacement under this limited warranty and labor or other cost incurred in connection with product removal or installation under this limited warranty.

Responsibility for compliance with local code requirements: since local code requirements vary greatly, distributors, retailers, dealers, installation contractors and users of plumbing products should determine whether there are any code restrictions on the installation or use of a specific product. This warranty does not apply in case of violation of local compliance rules.

THIS WARRANTY IS THE EXCLUSIVE COMMERCIAL WARRANTY GRANTED BY GESSI AND IS IN LIEU OF ALL OTHER WARRANTIES EXPRESSED OR IMPLIED, INCLUDING THE IMPLIED WARRANTY OF MERCHANTABILITY AND GESSI USA OR FITNESS FOR A PARTICULAR PURPOSE.

THIS WARRANTY IS LIMITED SOLELY TO THE ABOVE AND THIS WARRANTY AND ANY WARRANTIES IMPLIED BY STATE LAW; IF ANY WILL APPLY ONLY FOR THE APPLICABLE WARRANTY PERIOD SPECIFIED HEREIN. GESSI AND ITS US AUTHORIZED DISTRIBUTOR GESSI USA WILL NOT BE LIABLE FOR ANY LOSS, DAMAGE, EXPENSE OR INCIDENTAL OR CONSEQUENTIAL DAMAGES OF ANY KIND, WHETHER BASED ON WARRANTY, CONTRACT OR NEGLIGENCE AND ARISING IN CONNECTION WITH THE SALE USE OR REPAIR OF GESSI PRODUCTS . SOME STATES DO NOT ALLOW THE EXCLUSION OR LIMITATION OF CONSEQUENTIAL DAMAGE OR LIMITATIONS ON HOW LONG AN IMPLIED WARRANTY LASTS. AS A RESULT, IN CERTAIN STATES THE ABOVE LIMITATIONS OR EXCLUSIONS MAY NOT APPLY. THIS WARRANTY GIVES YOU SPECIFIC LEGAL RIGHTS, AND YOU MAY ALSO HAVE OTHER RIGHTS WHICH VARY FROM STATE TO STATE, UNLESS OTHERWISE CONTRARY TO STATE LAW GOVERNING THE PURCHASE, GESSI LIABILITY WILL NOT EXCEED THE CONTRACT PRICE FOR THE PRODUCT CLAIMED TO BE COVERED UNDER A WARRANTY CLAIM.

For service under this warranty a claim should be made through the contractor or dealer from or through whom the covered product was purchased, or that a service request, including a description of the product model, of the defect and a request for RGA be sent to the following address:

Gessi USA, Inc.

704 North Valley Street, Suite E

Anaheim – California 92801 CA

Tel 714 808 0099

Fax 714 808 0973

Please include in your letter:

- data of purchase and installation
- model, serial number of product, description of part to consider
- description of the defect
- copy of original sales receipt (without a sales receipt Gessi will not honor this warranty; the warranty rights are not valid).

APPLICABLE LAW

This warranty is governed by California without effect to its conflict of laws rules . If your purchase was made directly from Gessi S.p.A. the California Commercial Code applies and application of the UN Convention on International Sales of Goods is expressly excluded.

This is Gessi' s exclusive commercial written warranty

MAINTENANCE - ENTRETIEN - MANUTENCIÓN

USE PRECAUTIONS / MAINTENANCE / SUGGESTIONS

Precautions for Installation

- Before installing the faucet, flush the water supply lines of all debris.
- After installation, a plumber should check for any leakage, by leaving water running for two 15 -minute periods.
- Always turn water OFF on both hot and cold water supply lines before removing existing faucet or disassembling the valve. Open faucet handle to relieve water pressure and ensure that complete water shut – off has occurred.

Technical Data and Compliance Requirements

- Working pressure should not be lower than 1,4 bar (20 psi) and not be higher than 5 bar (72 Psi). In case of higher working pressure use a pressure reducer valve.
- Maximum test installation pressure: 8 bar (116 psi).
- Avoid major pressure differences between hot and cold water supply. Differences in pressure, water with high mineral content, and soapy substances can corrode the internal and external parts of the hoses and slowly break it, causing leakage.
- Maximum working temperature for Gessi products is 70 °C (158 °F).

Internet Purchase and Unauthorized Sellers:

Gessi and its authorized US distributor Gessi USA warns against buying its products from any reseller or retailer that is not an authorized Gessi reseller located within or outside the US and Canada. Sometimes the price quoted may be lower in order to induce customers to purchase, especially in the case of Internet sales. However, products offered for sale by unauthorized resellers may be non-genuine Gessi products or may not be modified to US / Canadian standards, resulting in installation and performance-related problems.

ONLY GESSI PRODUCTS SOLD BY AUTHORIZED DEALERS AND RESELLERS ARE COVERED BY THE GESSI WARRANTY.

ANY MODIFICATION TO THE PRESENT WARRANTY IS VALID ONLY IF IN WRITING EXECUTED BY GESSI, GESSI AND GESSI USA'S SALES PERSONS AND /OR DISTRIBUTOR OR DEALERS MAY NOT MODIFY THIS WARRANTY IN ANY MANNER WHATSOEVER GESSI AND GESSI USA RESERVE THE RIGHT TO MODIFY ITS PRODUCTS OFFERINGS AND WARRANTIES AT ANY TIME WITHOUT PRIOR NOTICE.

NOTES - NOTES - NOTAS

A series of horizontal dotted lines for writing notes, spanning the width of the page.

